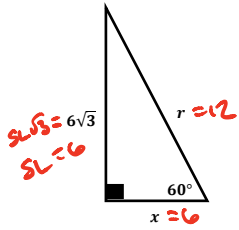


Right Triangles – Special Right Triangles

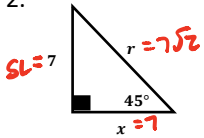
Homework Section 8.4

Name _____

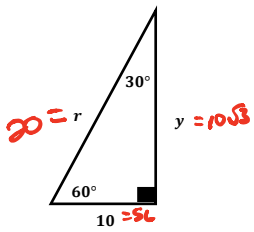
1.



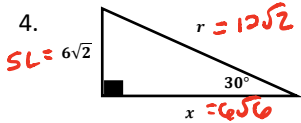
2.



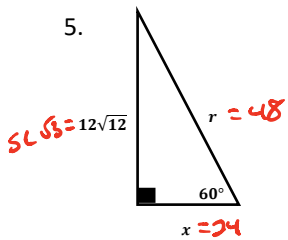
3.



4.

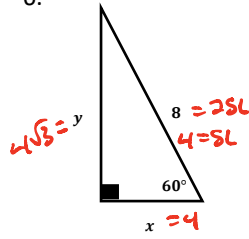


5.

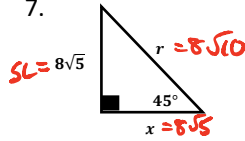


Handwritten calculations:
 $SL\sqrt{3} = 12\sqrt{12}$
 $SL = 12\sqrt{4}$
 $SL = 12 \cdot 2$
 $SL = 24$

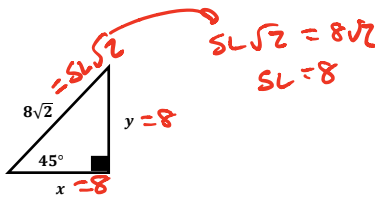
6.



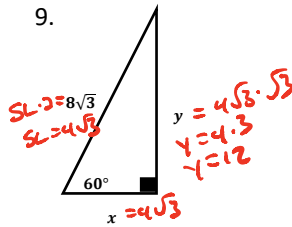
7.



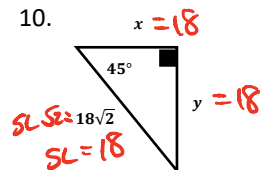
8.



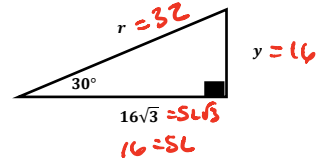
9.



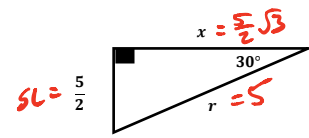
10.



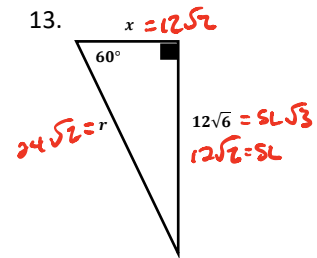
11.



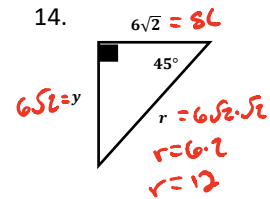
12.



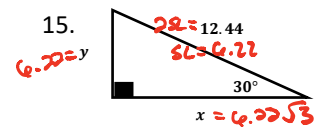
13.



14.



15.



Right Triangles – Special Right Triangles

Homework Section 8.4

Name _____

16. $x = \frac{11}{2}$

 $SL\sqrt{2} = \frac{11\sqrt{2}}{2}$
 $SL = \frac{11}{2}$

21. $9 = SL\sqrt{3}$

 $\frac{9}{\sqrt{3}} = SL$
 $\frac{9\sqrt{3}}{3} = SL$
 $3\sqrt{3} = SL$

26. $21 = SL\sqrt{3}$

 $7\sqrt{3} = y$
 $\frac{21}{\sqrt{3}} = SL$
 $\frac{21\sqrt{3}}{3} = SL$
 $7\sqrt{3} = SL$

17. $x = 4\sqrt{6}$

 $4\sqrt{2} = y$
 $8\sqrt{2} = 2SL$
 $4\sqrt{2} = SL$

22. $x = 5\sqrt{3}$

 $r = 10$

27. $SL\sqrt{2} = 11$

 $SL = \frac{11}{\sqrt{2}}$
 $SL = \frac{11\sqrt{2}}{2}$

18. $x = \sqrt{5}$

 $\sqrt{5} = y$
 $\frac{\sqrt{10}}{\sqrt{2}} = SL\sqrt{2}$
 $\sqrt{5} = SL$

23. $14 = SL\sqrt{2}$

 $7\sqrt{2} = y$
 $x = 7\sqrt{2}$
 $\frac{14}{\sqrt{2}} = SL$
 $\frac{14\sqrt{2}}{2} = SL$
 $7\sqrt{2}$

28. $SL\sqrt{2} = 6$

 $3\sqrt{2} = y$
 $x = 3\sqrt{2}$
 $SL = \frac{6}{\sqrt{2}}$
 $SL = \frac{6\sqrt{2}}{2}$
 $SL = 3\sqrt{2}$

19. $x = 7$

 $y = \frac{7\sqrt{3}}{2}$
 $2SL = 7$
 $SL = \frac{7}{2}$

24. $x = \sqrt{3}$

 $2\sqrt{3} = r$
 $3 = SL\sqrt{3}$
 $\frac{3}{\sqrt{3}} = SL$
 $\frac{3\sqrt{3}}{3} = SL$
 $\sqrt{3} = SL$

29. $x = 3\sqrt{6}$

 $3\sqrt{2} = y$
 $6\sqrt{2} = 2SL$
 $3\sqrt{2} = SL$

20. $x = 5\sqrt{2}$

 $5\sqrt{2} = y$
 $10 = SL\sqrt{2}$
 $\frac{10}{\sqrt{2}} = SL$
 $\frac{10\sqrt{2}}{2} = SL$
 $5\sqrt{2} = SL$

25. $16 = y$

 $8\sqrt{8} = SL\sqrt{2}$
 $8\sqrt{4} = SL$
 $8 \cdot 2 = SL$
 $16 = SL$
 $16 = x$

30. $30 = SL\sqrt{3}$

 $20\sqrt{3} = r$
 $10\sqrt{3} = x$
 $\frac{30}{\sqrt{3}} = SL$
 $\frac{30\sqrt{3}}{3} = SL$
 $10\sqrt{3} = SL$